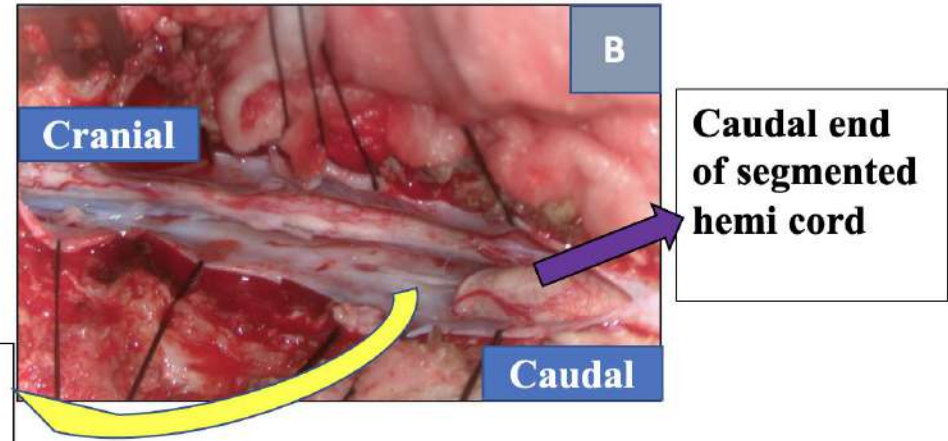
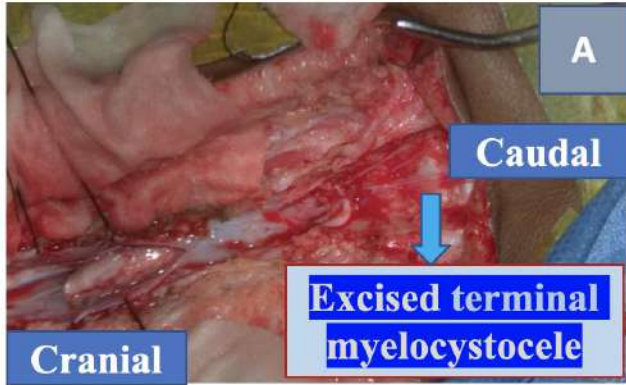
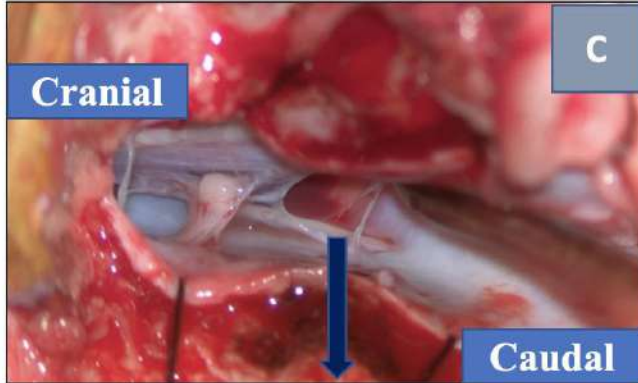


Surgery

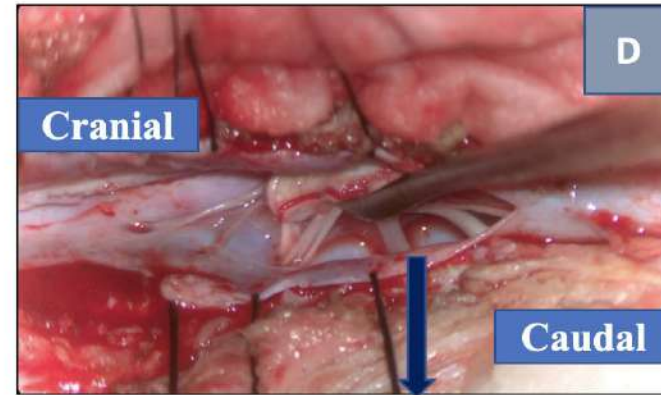
- The child underwent D10 to L3 laminectomy and detethering of cord
- The posterior element distal to L3 was deficient and lower end of cord was noticed at L5
- Myelocystocele against L5 to S2 was excised
- Aggenesis of the hemi cord at split cord level was noticed on the left side from L1 to L4 level



Aplastic part of segmented hemi cord



Cranial end of the segmented hemi cord with attached nerve root



Caudal end of the segmented hemi cord with attached nerve root

Case Summary

- This female child was brought by parents with complaints of gradually progressive swelling over the lumbosacral region since birth. With growing age the paucity of movement was noticed in left leg and at present the child was ambulant with support. The MRI spine was suggestive of low lying cord, terminal myelocystocele with split cord malformation. She underwent long segment exposure, in view of complex pathology; excision of myelocystocele and detethering of the cord. A small segment of left hemi cord was grossly aplastic with vestigial nerve roots arising from it. Wound was closed in layers. After surgery there was no fresh complaints and the child showed uneventful recovery
- Follow up MRI scan is awaited

Suggested Readings

- Moriya J, Kakeda S, Korogi Y, Soejima Y, Urasaki E, Yokota A. An Unusual Case of Split Cord Malformation Am J Neuroradiol 2006;27:1562-4.
- Pang D, Dias MS, Ahab-Barmada M. Split cord malformation: Part I: A unified theory of embryogenesis for double spinal cord malformations. *Neurosurgery*. 1992;31:451–80.
- Mahapatra AK, Gupta DK. Split cord malformations: A clinical study of 254 patients and a proposal for a new clinical-imaging classification. *J Neurosurg*. 2005;103:531–6.
- Bruce A, M'Donald S, Pirie JH. A second case of partial doubling of the spinal cord. *Rev Neurol Psychiatry*. 1906;4:6–19.