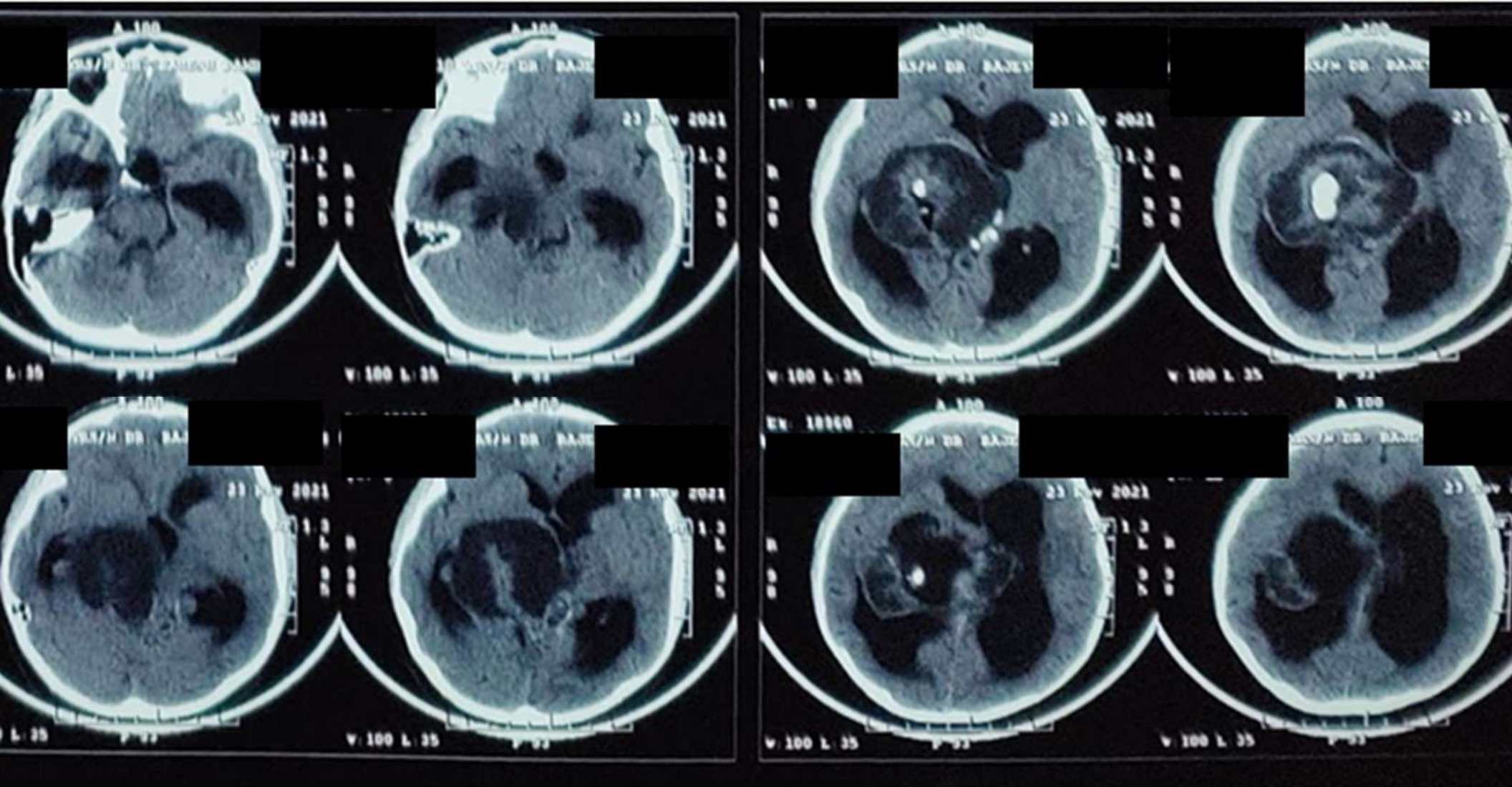
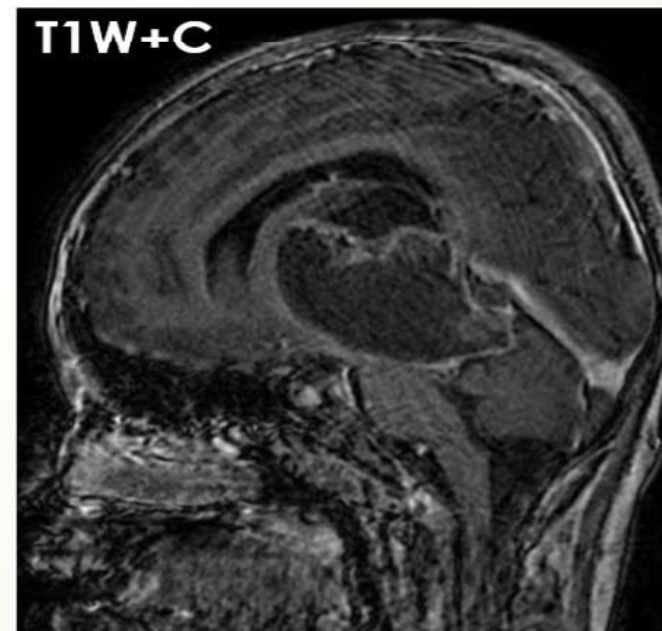
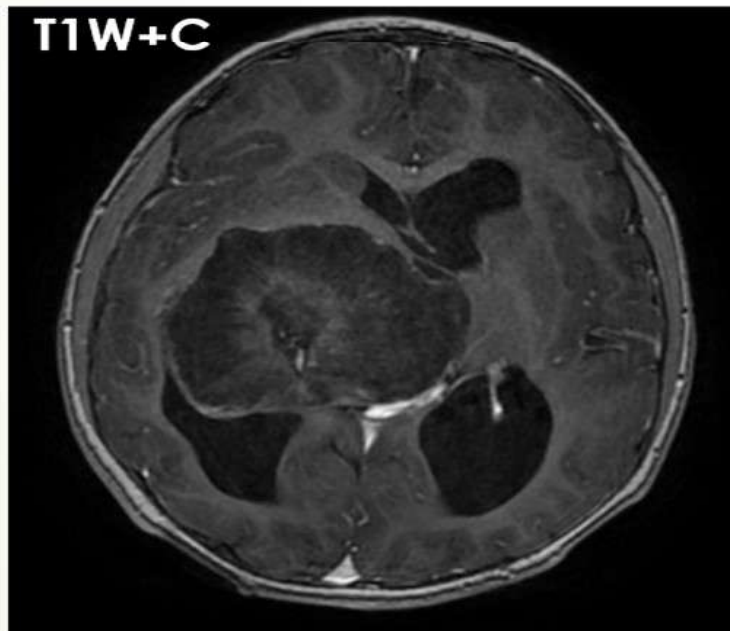
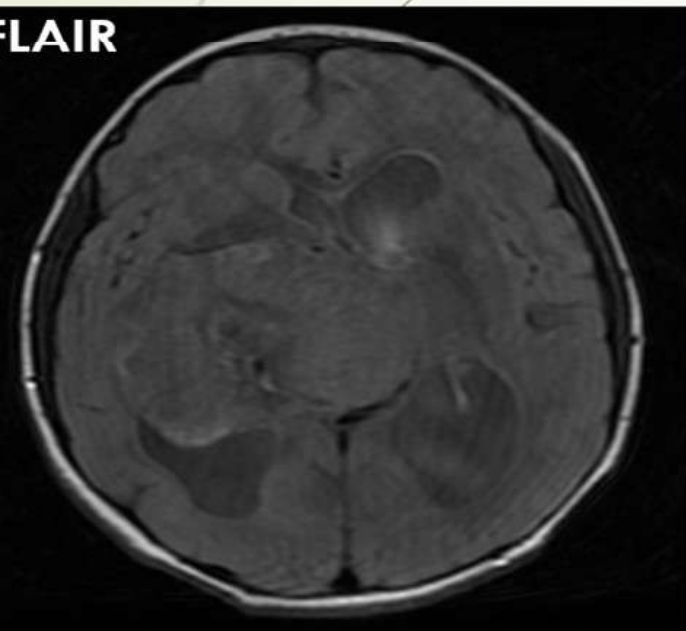
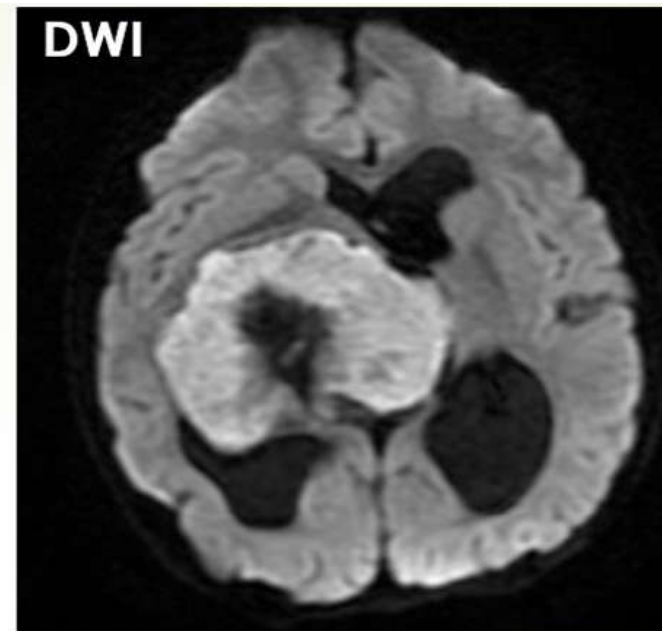
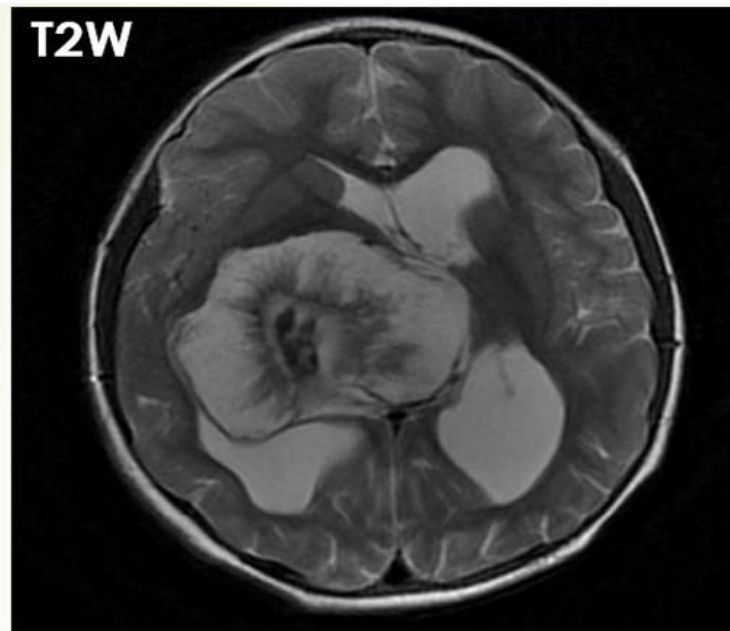
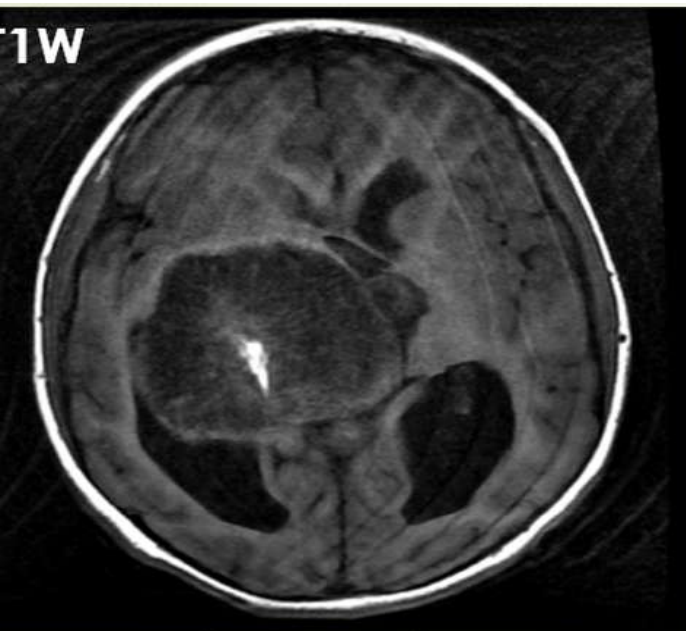


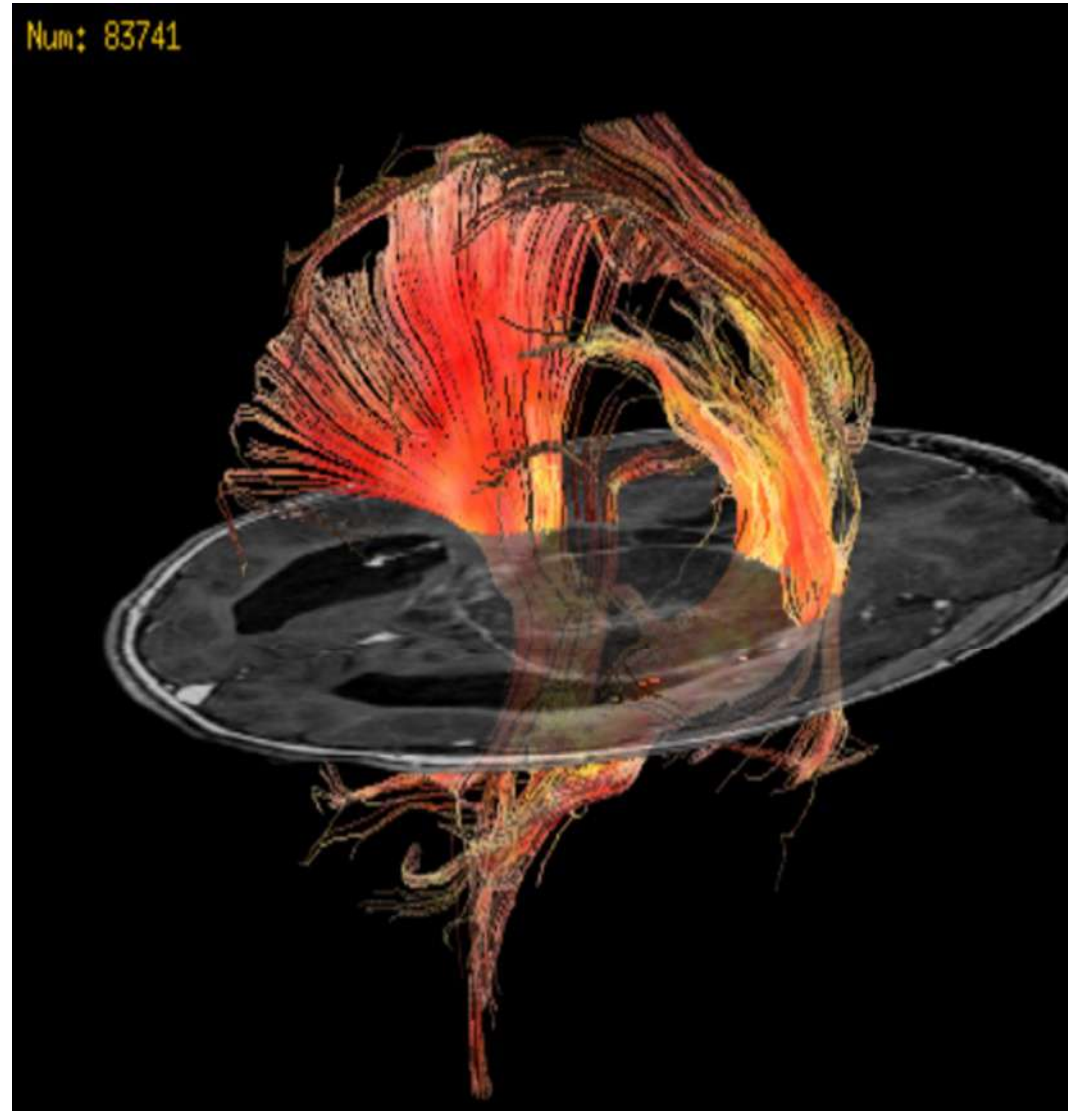
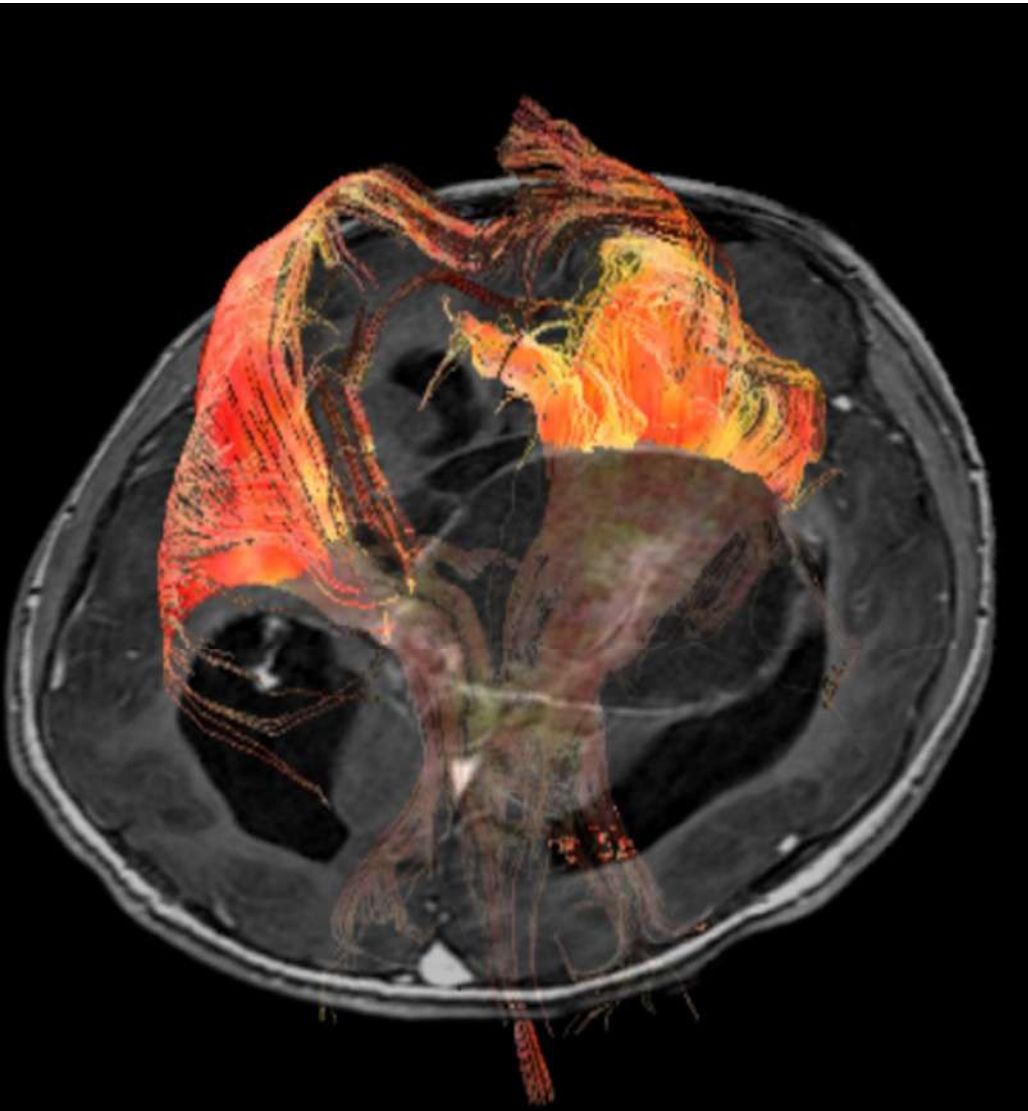
Imaging Findings



CT Brain Plain



MRI Brain Plain+ Contrast



Diffusion Tensor Imaging

➤ **CT Brain Plain:** A large right thalamic SOL with mixed density and a hyperdense core was seen.

➤ **MRI Brain (Plain + Contrast)**

- The lesion appeared mixed intensity (predominantly hypo- on T1W and hyperintense on T2W sequences) centered in the right thalamus.
- T1- hyper and T2- hypointense core at the center of the lesion was suggestive of calcification.
- The lesion did not show contrast enhancement.
- DTI showed corticospinal tracts displaced anterior to the lesion.

Radiological Impression



Differential Diagnosis

